

VE-PG3 Application Notes

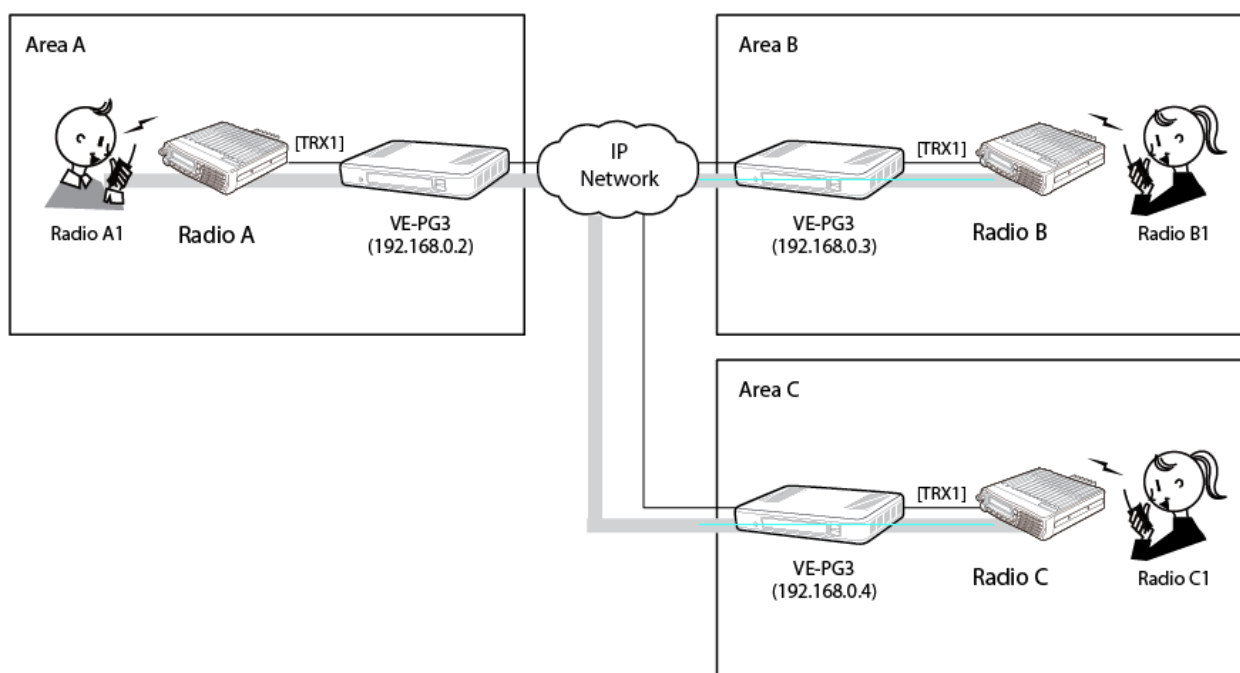
MULTICAST MODE: DIGITAL NXDN OPERATION

What is Multicast Mode?

The Digital Multicast Mode allows you to connect (bridge) from your portable and talk to multiple portable radios in other areas. An IP connection provides communication through the VE-PG3 and fixed base stations to the other areas.

Multicast Operation

In this Application, Radio A1 transmits to Radio A. Radio A sends the signal through its VE-PG3 to remote sites B, C, etc. Next, the Remote Site's VE-PG3s will send that signal to its connected Radio and then Radio B will transmit the same signal to other Radios (Radio B to Radio B1/ Radio C to Radio C1 etc.).



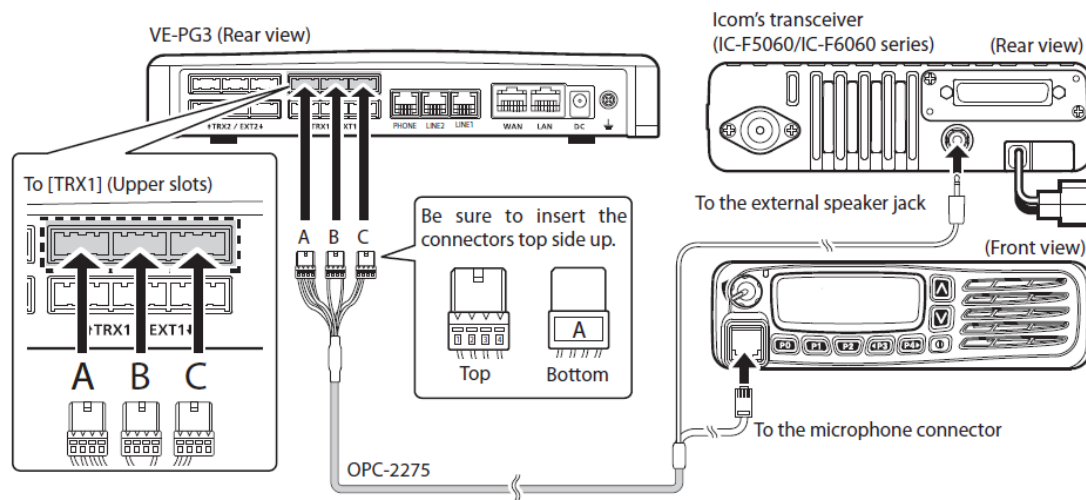
What You Will Need

- Two or more VE-PG3 units
- Two or more F5061 mobile radios, digital mode
- Two or more F3161 handheld radios, digital mode
- Two or more OPC-2275 cables (for connecting the VEPG3 and the F5061 radio)

How to Connect

Connect the VE-PG3 and the mobile radio as shown in the following diagram.

Note: Ensure that the radio and VE-PG3 are turned off before connecting.



- The [TRX1] and [TRX2] ports (upper slots) accept the OPC-2275 connectors, however, follow the example to correctly connect the transceiver to ONLY the [TRX1] on the VE-PG3.

Programming the Radios

1. Program Radios A and A1 at Site A so that their frequencies match (Digital Simplex Mode).
2. Program Radios B and B1 (or if applicable, C and C1 etc.) at Site B so that their frequencies match (Digital Simplex Mode).
3. Set the volume to the 9 o'clock position on the F5061 radios.

Programming the VE-PG3

The following paragraphs describe how to:

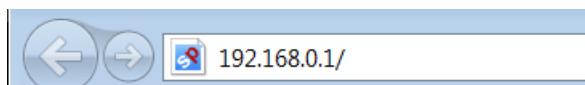
- Change the VE-PG3 IP address
- Program for Multicast

Changing the VE-PG3 IP Address

You will need to change the IP address for each VEPG3 device to addresses determined by your network plan. Consult your IP professional to create a network plan.

Note: Your VE-PG3 will need to be connected as described in *How to Connect*.

1. Open your web browser. The default address is: 192.168.0.1.



2. Enter the newly assigned IP address of the VE-PG3 in the address field.

3. After pressing Enter, the Login Authentication window will appear.

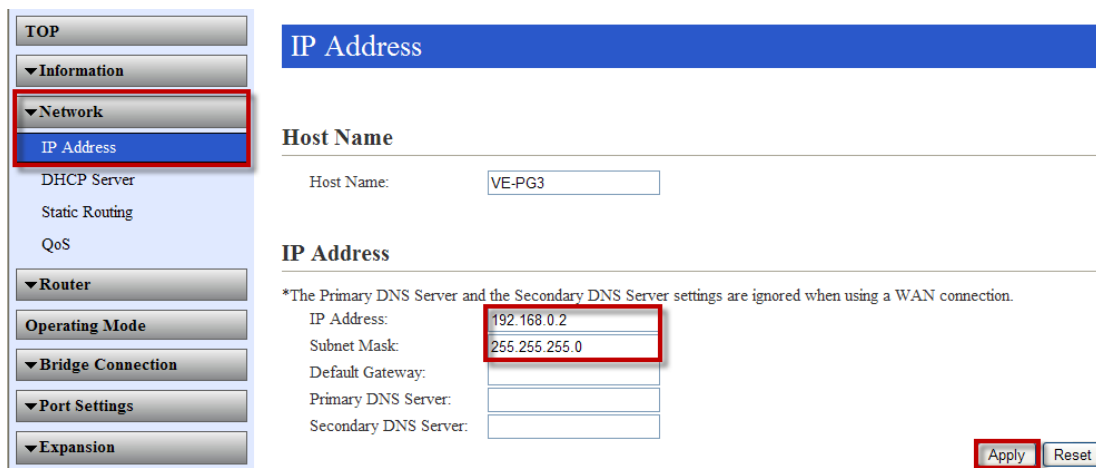


4. Enter the following (default) information:

- Username Admin
- Password Admin

Set a new IP address for your VE-PG3 according to your network plan.

5. Click **Network** and select **IP Address**.
6. Enter your VE-PG3 IP Address according to your network plan and click **Apply**.



IP Address

Host Name

Host Name:

IP Address

*The Primary DNS Server and the Secondary DNS Server settings are ignored when using a WAN connection.

IP Address:

Subnet Mask:

Default Gateway:

Primary DNS Server:

Secondary DNS Server:

7. Click Reboot to enter the new VE-PG3 IP Address.



IP Address

A reboot is required to apply all the new settings.

Host Name

Host Name:

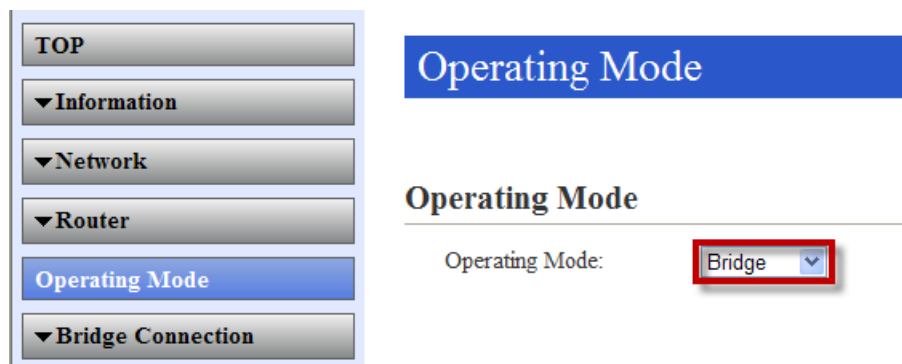
Note: depending on your newly assigned IP address, you computer IP address may have to be changed to access the VE-PG3 again.

Once you have rebooted, the login window will appear. Enter the username and password again.



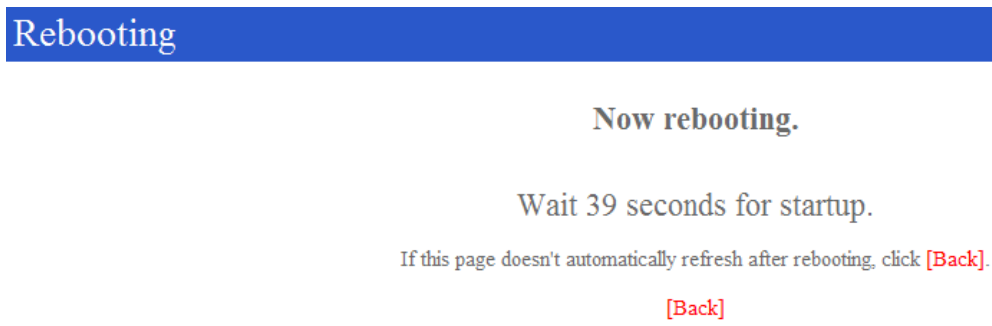
Programming for Multicast Operation

Click **Operating Mode**. Ensure that **Bridge** is selected in the dropdown box. Be sure to click **Apply** if you change the setting to **Bridge**.

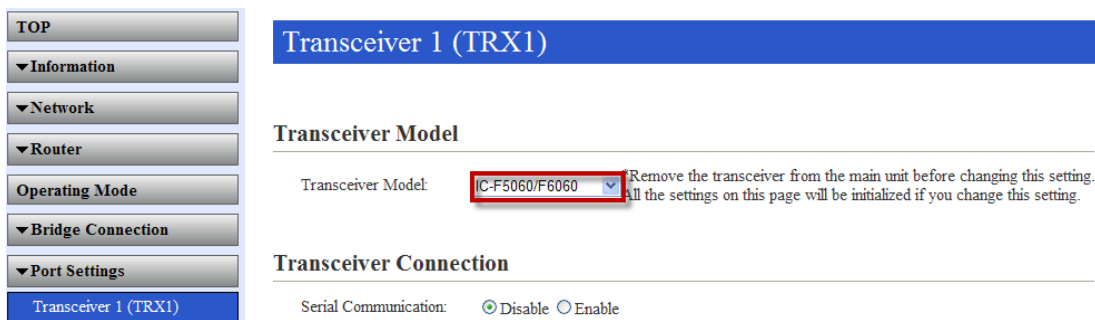


Note: Changing any settings in **Bridge Connections** is not required for Multicast setup. Leave all settings at Default.

1. After clicking **Apply**, you will be prompted to reboot. Follow the instructions in the boot sequence.



- Click the **Port Settings** menu. The Transceiver 1 window will appear. Verify the desired radio model is listed in the drop-down list.



Your VE-PG3 devices are now configured for use.